

Releasable check valve type HRP

Check valves with hydraulic release are a type of check valve. They block one or both hydraulic consumer lines or are used as a hydraulically actuated drain or circulation valve. In the closed state the check valve type HRP has zero leakage. A leakage line relieves the rear of the control piston. Due to this separate relief the control behaviour of the valve is independent of the pressure in the return.

A solenoid valve can be optionally flange-mounted to arbitrarily control the check valve with the load pressure on the consumer side. The check valve type HRP is available with a hydraulic release. Hydraulic release suppresses relief surges that can occur at high pressure and with a large consumer volume.

Features and benefits:

- Manifold mounting valve for pressures up to 700 bar
- Flows up to 400 lpm
- Electrically controlled
- With hydraulic release for smooth switching

Intended applications:

- Industrial and mobile hydraulics



Nomenclature:	Check valve with hydraulic release
Design:	Manifold mounting valve
Actuation:	Hydraulic Electro-hydraulic
p_{max}:	700 bar
Q_{max}:	400 l/min

Design and order coding example

HRP 4 V - B 0,4 - WH 1H B 0,4-G24

Optionally with directly mounted 3/2-way directional seated valve

For arbitrary open-up or for use as 2/2-way directional seated valve

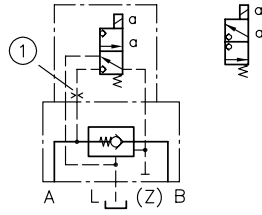
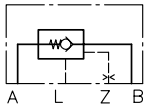
Optionally with orifice insert at control port Z For preventing decompression surges

Function Without pre-release (-)
With pre-release (V)

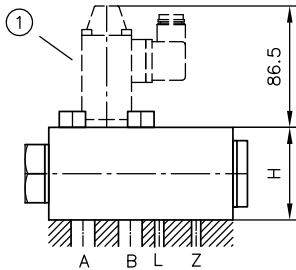
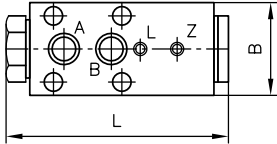
Basic type, size Check valve with hydraulic release HRP, size 1 to 7

Function

HRP



General parameters and dimensions



1 Flange-mounted 3/2-way solenoid valve

	Q_{\max} [lpm]	p_{\max} [bar]	Release ratio	Dimensions [mm]			m [kg]
			p_A / p_Z	H	B	L	
HRP 1	20	700	2.9	20	25	74.5	0.25
HRP 2	35	700	3.9	25	30	78	0.4
HRP 3	50	500	4.3	35	35	83	0.7
HRP 4	80	500	3.8	35	50	103.5	1.2
HRP 5	140	500	4.0	40	60	120.5	1.9
HRP 7 V	400	500	3.0	63	100	190	8.0

Associated technical data sheets:

- Releasable check valve type HRP: [D 5116](#)

Similar products:

- Releasable check valve type RH: [D 6105](#)
- Releasable check valve type RHV: [D 3056](#)
- Releasable check valves type CRH, RHC: [D 7712](#), [D 7165](#)
- Releasable twin check valve type DRH: [D 6110](#)